



ESSENTIALS OF AZTRANSFER

Vision: College degree pathways are accessible to all Arizonans.

Kelly Robles & Rebecca McKay

EXECUTIVE DIRECTOR | DIRECTOR OF TECHNOLOGY

Part One

ABOUT AZTRANSFER



ORGANIZATION & FUNDING

- Formed as a result of state legislation in 1996
- Governed by the AZTransfer Steering Committee, which is comprised of representatives from the state's public and tribal community colleges, the three state universities, and the Arizona Board of Regents.
- Funded by these institutions and the Arizona Legislature. Each institution pays annual dues, calculated by the previous year's audited enrollment numbers.

About AZTransfer

PARTICIPATING COLLEGES & UNIVERSITIES



GOALS & OBJECTIVES

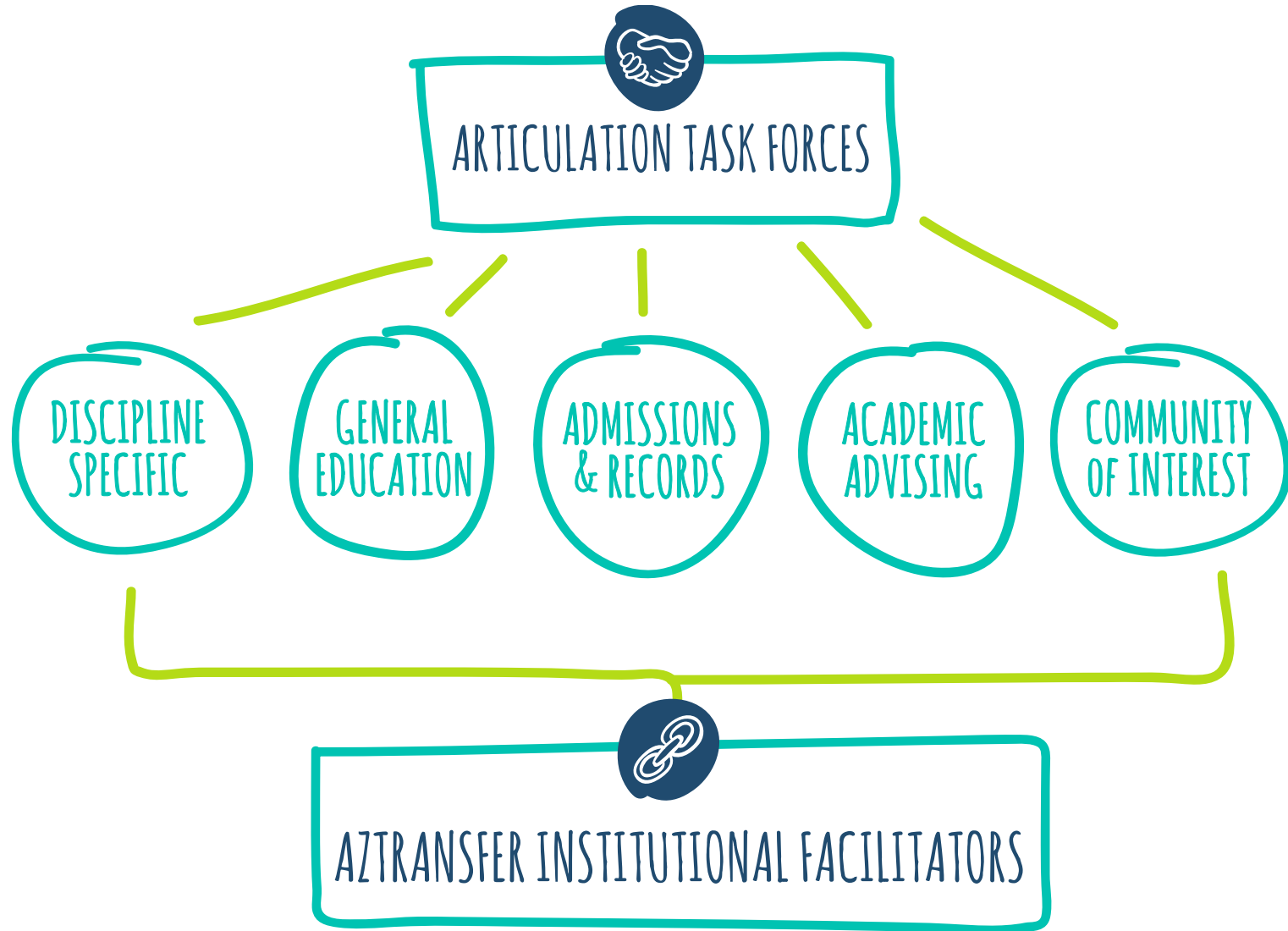
To increase the number of transfers, reduce credit hours earned, and increase baccalaureate degree recipients.

Strategic Plan Goals 2014-2017

- Provide tools to support transfer
- Inform students about program requirements and transfer options
- Promote and facilitate communication among public and tribal postsecondary educators
- Identify and respond to emerging needs and trends in transfer.

About AZTransfer

ARIZONA TRANSFER SYSTEM



About AZTransfer – 41 ATFs & 3 Community of Interests

Articulation Task Forces

Administration of Justice Studies

Agriculture

Allied Health/Health Related Professions

Anthropology

Art

Biology

Business

Chemistry

Communication

Computer Science & CIS

Dance

Early Childhood Education

Economics

Education

Engineering

English

Exercise Science & Kinesiology

Family Studies & Consumer Sciences

Geography

Geology

History

Hospitality

Humanities

Interior Design

Journalism and Media Arts

Languages

Mathematics

Music

Nursing

Nutrition

Parks & Rec, Tourism & Nonprofit Mgt.

Philosophy

Physics, Physical Science & Astronomy

Political Science

Psychology

Religious Studies

Social Work

Sociology

Technology

Theatre Arts

Women and Gender Studies

COI: Developmental/Transitional

COI: Social Justice

COI: Sustainability

Common Pathway: AA SR Take Intro to Psychology, Intro to Measurement and Statistics, and Research Methods. Take ONE additional course from the electives list. **Note: for other transferable psychology courses offered at the institutions shown below, please go to the Course Equivalency Guide, select a specific college, then select "Psychology."**

Arizona General Education Curriculum AGECA

Shared Majors: A shared major is a university degree program that has similar academic preparation to one or more degree programs at other Arizona public universities.

| Institution | Degree | Major |
|-----------------|--------|------------------------------------------|
| ASU Lake Havasu | BA | Psychology |
| ASU Online | BA | Psychology |
| ASU Poly | BS | Applied Psychology |
| ASU Poly | BS | Industrial and Organizational Psychology |
| ASU Tempe | BA | Psychology |
| ASU Tempe | BS | Psychology |
| ASU Tempe | BS | Psychology (Psychological Science) |
| ASU West | BA | Psychology |
| ASU West | BS | Psychology |
| NAU | BA | Psychology Psychological Sciences |
| NAU | BS | Psychology Psychological Sciences |
| UA | BA | Psychology |
| UA | BS | Psychology |

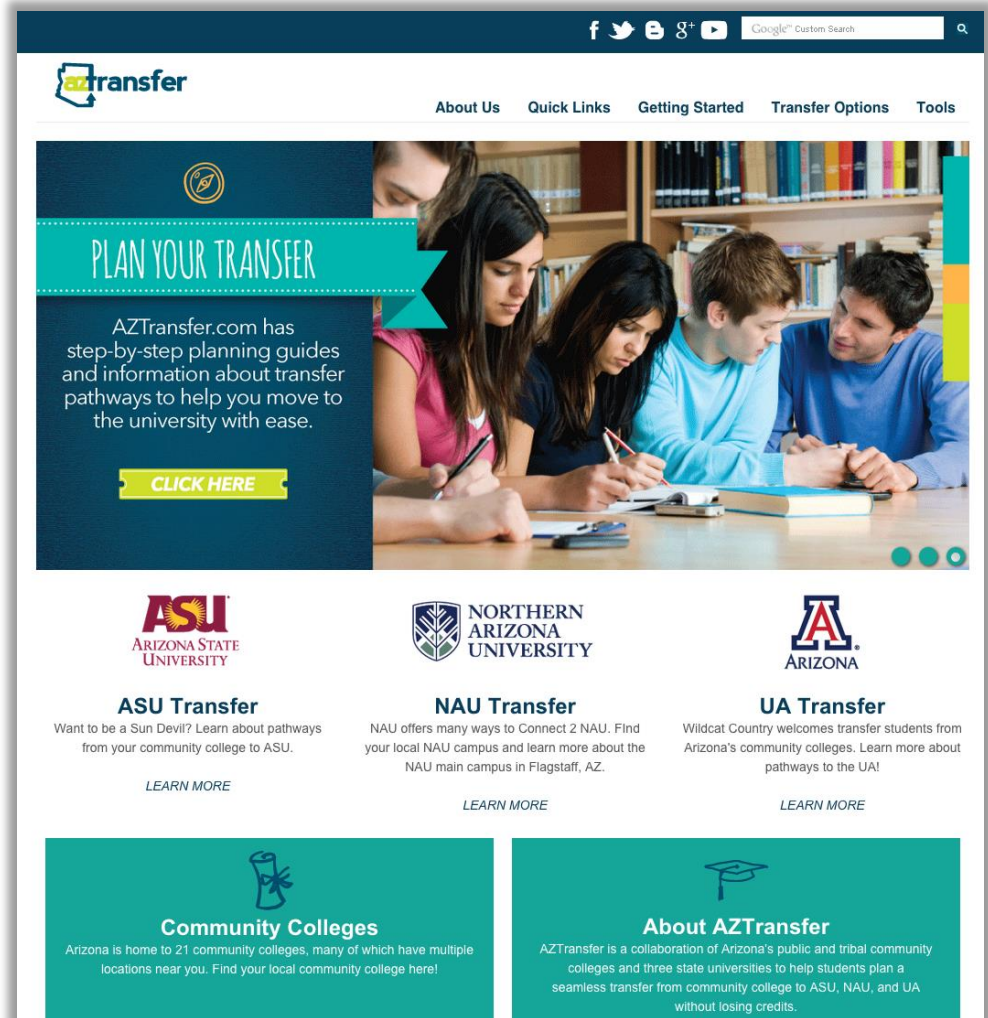
Common Courses

| * | Introduction to Psychology | Intro Measurement & Statistics | Research Methods |
|---------|-------------------------------|--------------------------------|----------------------|
| ASU | PSY101 | PSY230 | PSY290 |
| NAU | PSY101 | PSY230 **** | DEC(PSY) * |
| UA | PSY101 | PSY230 | PSY290A & PSY297A |
| | | | |
| AWC | PSY101 | PSY230 | PSY290 |
| CAC | PSY101 | PSY230 | N/A |
| Cochise | PSY101 | PSY250 | PSY290 |
| CCC | PSY101 | PSY230 | N/A |
| Dine | PSY111 | N/A | Not Offered |
| EAC | PSY101 | PSY220 | PSY270 |
| MCCCD | PSY101 | PSY230 | PSY290AB or PSY290AC |
| Mohave | PSY101 | PSY 235 | N/A |
| NPC | PSY101 | PSY201 | N/A |
| Pima | PSY101 or (PSY100A & PSY100B) | PSY230 | PSY289 |
| TOCC | PSY101 or (PSY100A & PSY100B) | PSY230 | N/A |
| Yavapai | PSY101 | PSY230 | PSY290 |

About AZTransfer

THE PRODUCT: AZTRANSFER.COM

- E-Advising platform
- Free to use and no sign-up required
- Transfer Tools including the Course Equivalency Guide, Exam Equivalency Guide, Major Guides, and more.



COURSE EQUIVALENCY GUIDE (CEG)

Basic Search

Prefix Number

HON

College

Maricopa Community Colleges

Transfer To

Search

2 Matches Found

Maricopa Course

ASU

NAU

UA

HON 190
Honors Forum

Summer I 2014 and beyond: Elective Credit

Summer 2014 and beyond: HON
Departmental Elective

Summer I 2014 and beyond: Elective Credit

HON 201
*Leadership Development:
Historical and Contemporary
Perspect*



Summer I 2014 and beyond: OGL 200,
Social-Behavioral Sciences (SB)

Summer 2014 and beyond: HON 144 also
satisfies: Social and Political Worlds [SPW]

Summer I 2014 and beyond: HED 201

Shared Unique Number (SUN) Course

Eligible for High School Dual Enrollment

AZ General Education Curriculum (AGEC)

Credit by examination available

SHARED UNIQUE NUMBERING

The SUN System is a college course numbering system designed to help Arizona students plan their education and ensure successful transfer of course credits.

College Algebra
SUN # MAT 1151

| College / University | Course Number |
|-------------------------------------|---------------|
| Arizona State University | MAT 117 |
| Arizona Western College | MAT 151 |
| Central Arizona College | MAT 151 |
| Chandler-Gilbert Community College | MAT 151 |
| Cochise College | MAT 151 |
| Coconino Community College | MAT 151 |
| Dine College | MAT 110 |
| Eastern Arizona College | MAT 154 |
| Estrella Mountain Community College | MAT 151 |
| GateWay Community College | MAT 151 |
| Glendale Community College | MAT 151 |
| Mesa Community College | MAT 151 |
| Mohave Community College | MAT 151 |
| Northern Arizona University | MAT 110 |
| Northland Pioneer College | MAT 152 |

EXAM EQUIVALENCY GUIDE (EEG)

The Exam Equivalency Guide shows students how exam scores may translate to college credit.

The EEG provides information on these four testing programs:

- Advanced Placement (AP)
- International Baccalaureate (IB)
- College Level Examination Program (CLEP)
- DANTES Subject Standardized Test (DSST)

Exam Equivalency Guide 2014-2015

| | | | |
|-------------------------|---------|-------------------------|--------|
| Advanced Placement (AP) | Biology | Central Arizona College | Search |
|-------------------------|---------|-------------------------|--------|

2 Matches Found

| Exam | Score | Course(s) | School |
|--------------|-------------------|---------------------------|-------------------------|
| Biology (AP) | Exam Score 3 | BIO 100 (4) | Central Arizona College |
| Biology (AP) | Exam Score 4 or 5 | BIO 181 (4) & BIO 182 (4) | Central Arizona College |

Arizona General Education Curriculum

[About Us](#)[Quick Links](#)[Getting Started](#)[Transfer Options](#)[Tools](#)

Arizona General Education Curriculum (AGEC)

[AGEC Course Search](#) | [AGEC Reports](#) | [Admin Login](#)

JUMP TO:

[English](#)[Mathematics](#)[Arts and Humanities](#)[Social and Behavioral Sciences](#)[Physical & Biological Sciences](#)[Computer Information Systems](#)[Additional Courses](#)[Writing Intensive](#)[Cultural Awareness](#)[Global Awareness](#)[Historical Awareness](#)[Critical Inquiry](#)

English

Select ENG 101 and ENG 102.

4 course(s) found

| Courses | Title | Credit | Effective Dates |
|---------|-------------------------|--------|----------------------------|
| ENG 101 | Freshman Composition | 3.00 | Fall 1999 to Summer I 2015 |
| ENG 102 | Freshman Composition | 3.00 | Fall 1999 to Summer I 2015 |
| ENG 101 | Freshman Composition I | 3.00 | Fall 2015 to present |
| ENG 102 | Freshman Composition II | 3.00 | Fall 2015 to present |

[::back to top::](#)

Mathematics

Select MAT 142 or approved higher level math.

11 course(s) found

Part Three

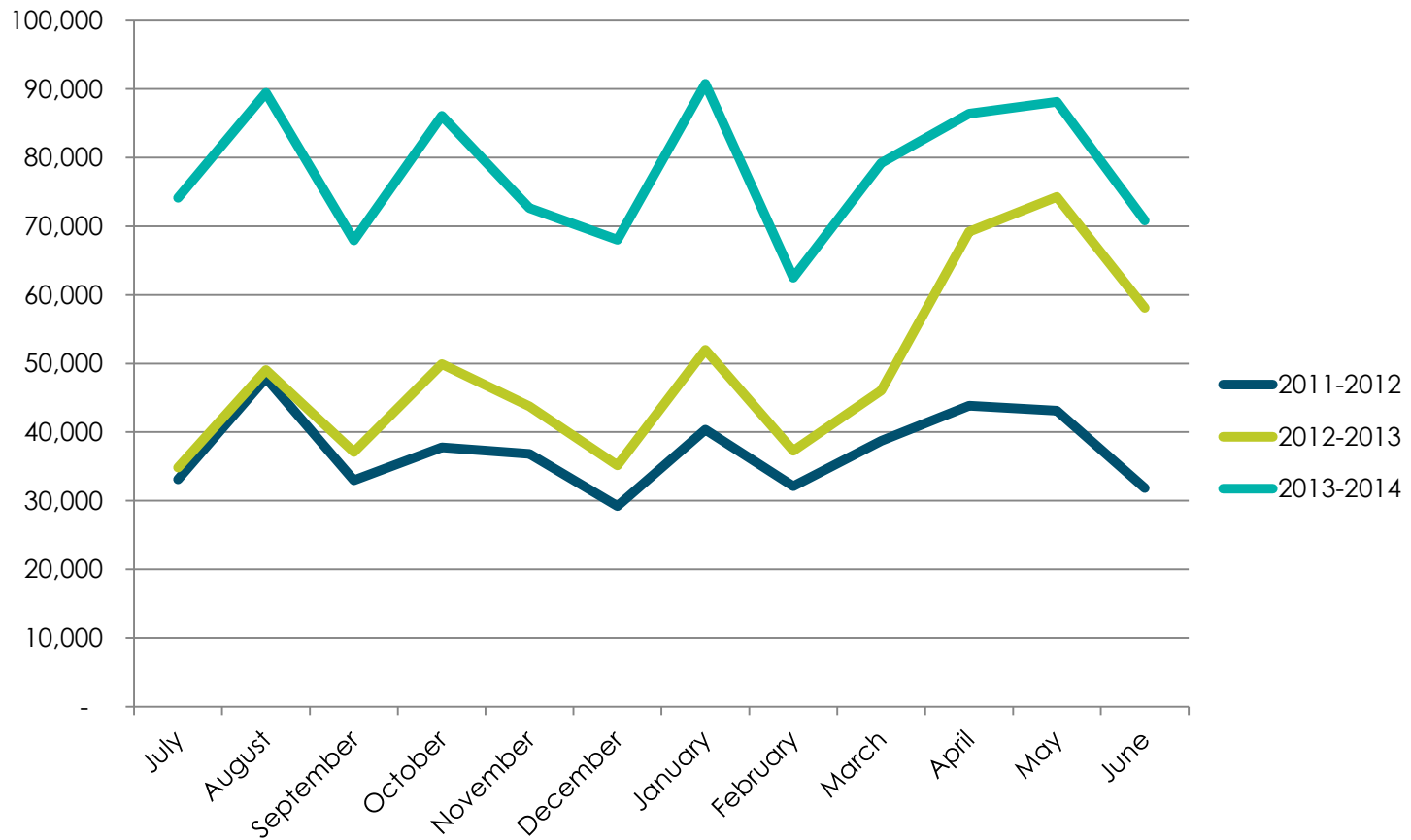
RESULTS



Results

SITE VISITS

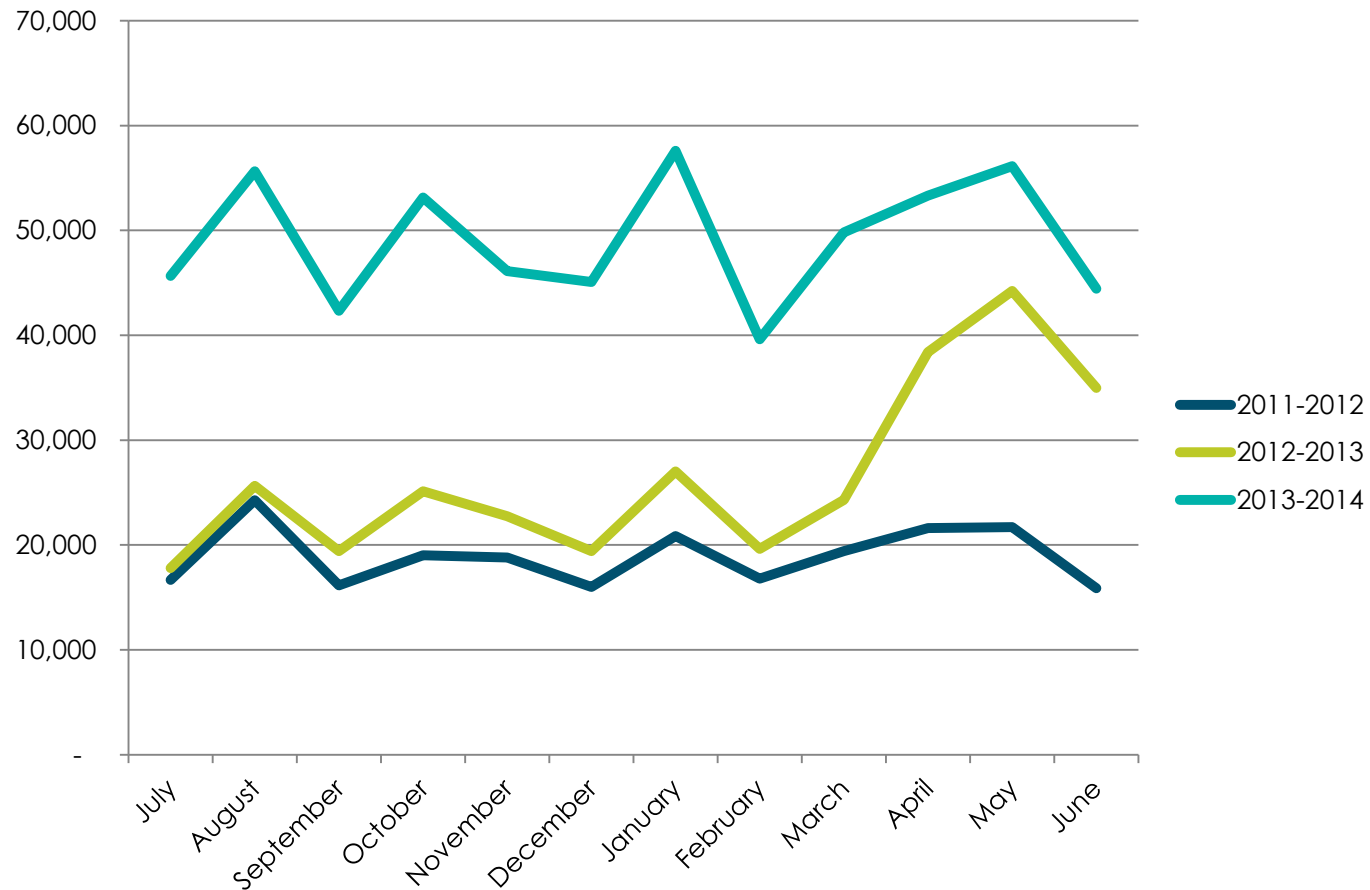
As reported by Google Analytics



Results

UNIQUE VISITORS

As reported by Google Analytics



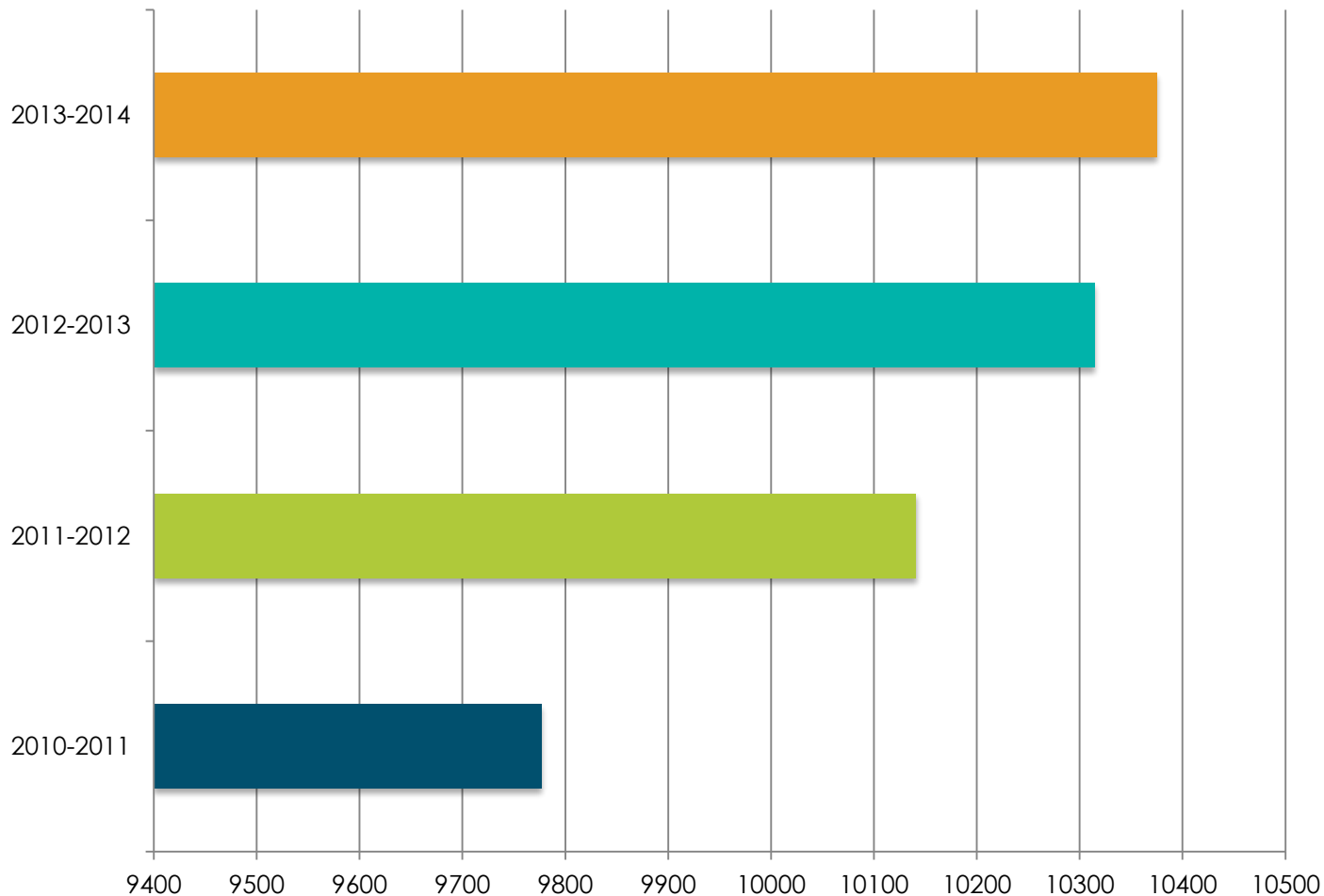
ASSIST

- The Arizona State System for Information on Student Transfer (ASSIST) is a relational database containing enrollment and degree information on students attending Arizona's public universities and community college districts.
- The information is made available to participating institutions through a statewide data warehouse.
- Institutions submit a data file at least once a year which contains all student course work, demographic info and degree completion info.

Results

NEW TRANSFERS

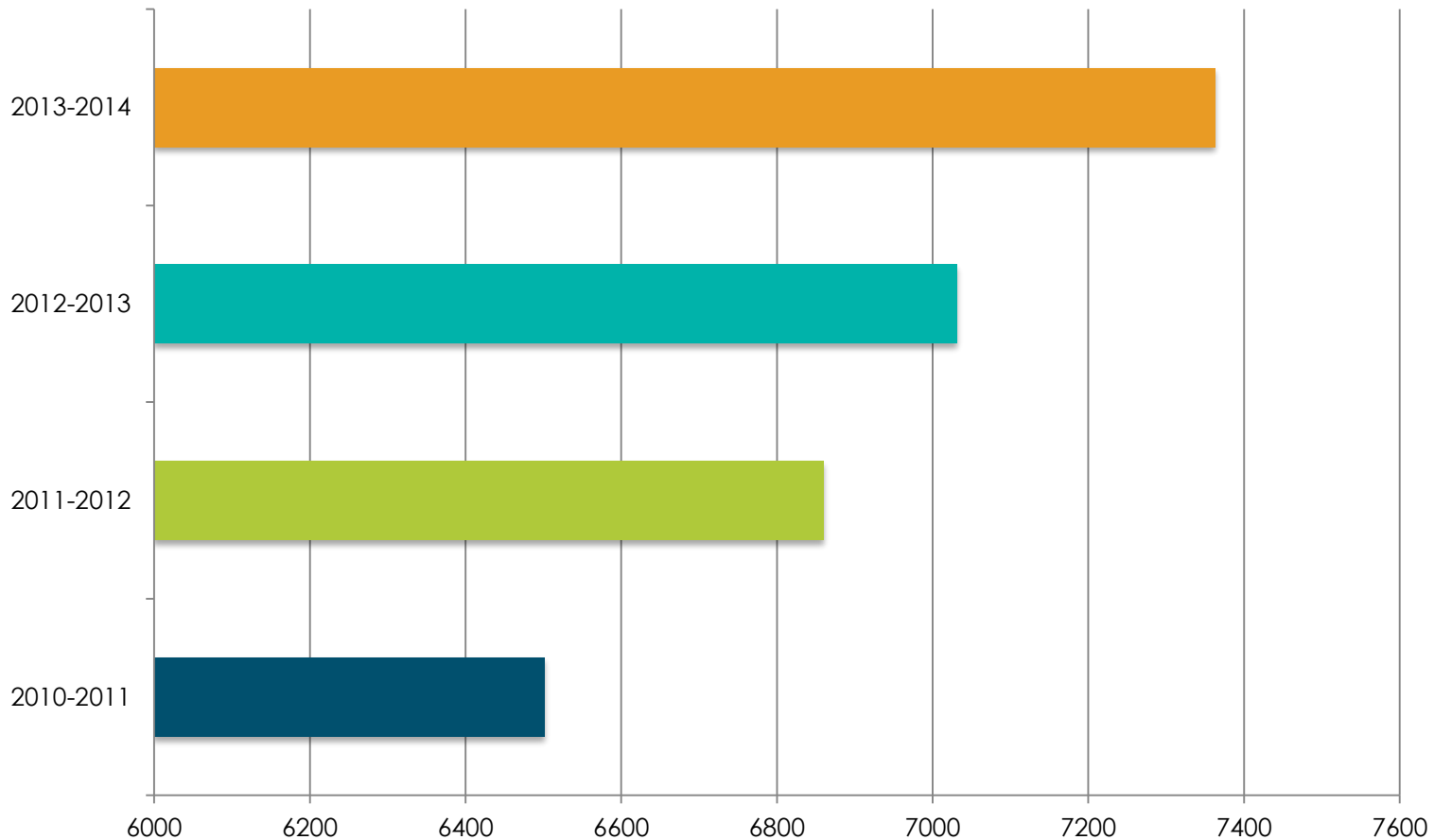
From AZ community colleges, as reported by the Arizona State System For Information on Student Transfer (ASSIST)



Results

BACCALAUREATE DEGREE RECIPIENTS

*Earned by transfers, reported by the Arizona State System
For Information on Student Transfer (ASSIST)*



What does it all cost?

BUDGET INFORMATION

| | |
|----------------------|------------------|
| TOTAL BUDGET: | \$780,000 |
|----------------------|------------------|

| | |
|------------------|-----------|
| Directors Office | \$215,000 |
|------------------|-----------|

2 Staff Members

| | |
|------------|-----------|
| Technology | \$180,000 |
|------------|-----------|

1 Staff Member

| | |
|-----------|-----------|
| Marketing | \$170,000 |
|-----------|-----------|

1 Staff Member

| | |
|---------------------|-----------|
| Data and Evaluation | \$195,000 |
|---------------------|-----------|

1 Staff Member

| | |
|-------------------|----------|
| AZTransfer Summit | \$20,000 |
|-------------------|----------|



Who pays?

BUDGET INFORMATION

BUDGET INCOME: **\$777,000**

| | |
|----------------------|-----------|
| State Appropriations | \$214,000 |
| Universities | \$277,000 |
| Community Colleges | \$277,000 |

Community Colleges pay a share based on FTE. The largest school pays \$168,000.00, while the smallest college pays less than \$300.00.



Contact Us

FUTURE OF AZTRANSFER

Credit for Prior Learning

Granting college credit based on assessment of a student's prior learning in the workplace, military or through other life experiences can have positive impacts on college affordability, institutional capacity and student success.

Reverse Transfer

When a community college student has transferred to a university prior to completing an associate's degree transfers credits from the university back to the community college to fulfill associate's degree requirements.

The End

QUESTIONS & COMMENTS





Contact Us

FOR MORE INFORMATION

Kelly Robles

Executive Director

kelly@aztransfer.com

480.731.8780

Rebecca McKay

Director of Technology

rebecca@aztransfer.com

480.731.8783

www.aztransfer.com